



THE SOUTHLAND TIMES

LEATHERS

SALE  
SALE  
SALE

SKECHERS

INVERCARGILL  
CENTRAL

PUBLIC & LANDSCAPE





Project: Waterview Tunnel, Auckland





All life on earth has evolved under a 24-hour day night cycle. Outdoor lighting at night is essential to human progress, safety, health and recreation, but uncontrolled it has negative impacts; people lose the ability to observe the night sky and nocturnal animals are disrupted – often fatally.

Approaching lighting design for the outdoors where unnecessary light pollution can be eliminated, providing good outcomes for people and the local environment, with improved observation of the night sky and less impact on ecology. This approach requires an effective design concept with a luminaire technology tailored to suit. Energylight and our partners worldwide are passionate about lighting for the outdoors and minimising the adverse effects of light at night.

Energylight offers continued professional development with education on; Richard Kelly's "Language of light", and lighting for the outdoors with an emphasis dark sky, ecology, and health and well-being. In 2019 I presented "The dark sky – Light pollution and adverse effects on ecology and how to reduce it" at the NZ Starlight (Dark Sky) conference in Tekapo.

We have provided information in this brochure to help you enhance the well-being of all life on earth through lighting the outdoor environment. For additional support, contact me or your local Energylight representative for your next outdoor lighting project.

*National Outdoor Lighting Specialist*  
– Mike Geddis





*"The urgent need for greater respect for the environment, coupled with the need for energy conservation and more consideration for people's mental and physical wellbeing, is guiding us towards a new way of working on architectural design, shifting the focus back to the location's context and cultural spirit, and refining people's sensitivity to the quality of the light."*

*- Architect Giovanni Traverso*





Project: Glenn Innes to Tamaki Drive  
cycleway - Auckland  
Photographer: Mark Scowen  
Featuring: ewo

## CONTENTS

Introduction	03
Dark Sky	06
Light for Ecology	07
Innovation	
ewo Chameleon GOBO & Eclipse	08
Extreme Corrosion Protection	09
ewo Lightlayers	10
Optic Combo	11
ERCO Tesis NEW	12-13
ENERGYLINE Robust	14-15
CU Phosco	16-17
Controls	18
Product Categories	19
Façade & Canopy	20
Landscape	21
Colour & Architainment	22
Public Realm	23
Roadway & Area Lighting	24
Pathway & Cycleway	25
Solar	26
Poles	27
Vandal Resistant	29
More Brochures	31
Contact Us	31



## Earth at Night: Global Map 2016 (NASA Earth Observatory)

*In a case study of skyglow published by Science Advance in the World Atlas of Artificial Night Sky Brightness in 2016, 83% of the world's population live under light-polluted skies and one in three people cannot see the Milky Way.*

### ADSA Approved



ERCO Kubus  
Bollard



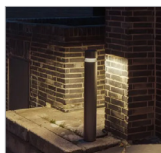
ewo Go  
Wall or poletop



ewo F System  
Projector



RZB Lightstream  
Mini

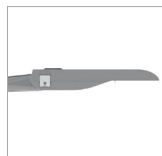


ERCO Castor  
Bollard

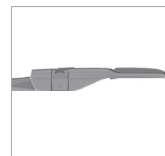


ewo FA170  
Bollard

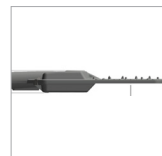
### International Dark Sky Approved



CU Phosco  
P852K



CU Phosco  
P863K



CU Phosco  
E951 64

# DARKSKY

## What defines light pollution?

The Dark Sky initiative requires that lighting design for outdoor areas is restricted to only that which is essential. If this is applied, then light pollution can be avoided and observation of the night sky is enhanced. Furthermore, this approach emphasizes the effectiveness of design concept using a luminaire technology suited to the task. Cooperation between lighting designers, architects, landscape architects, building owners, electrical installers and luminaire manufacturers throughout the building process is essential for successfully implementing a Dark Sky concept.

### What to avoid for Dark Sky:

**Glare:** uncontrolled intensity and distribution of light.

**Visual distraction:** bright, confusing groupings of uncontrolled light sources.

**Light trespass:** light falling where it is not intended or needed.

**Skyglow:** brightening of the night sky over inhabited areas.



# LIGHT POLLUTION IN NZ

## Lighting to support ecology

The Westland Petrel is an endemic seabird that breeds during winter in broadleaf rainforest on coastal hills near Punakaiki on the South Island West Coast. Like most burrow-breeding petrels they are nocturnal on land; returning to their colony after dark. In a phenomenon called “fallout”, bright lights disorients the birds causing them to crash land on the ground or on roads, which has been a significant cause of mortality of petrels of various species.

The situation worsened when 4000K LED lights were used in a recent street light upgrade. Local residents reported an increased number of “fallout” cases, and many raised concerns with the Waka Kotahi NZ Transport Agency. To remediate the issue, the Agency and local council have been working together to switching the lights off during fledging season which takes place from November to January.

Scientific studies have shown links between lighting pollution and animal behavior in areas ranging from courtship and migration to sense of direction. For most animals, cool tones artificial lights are the most dangerous, causing the greatest disruption. In contrast, long-wavelength sources with temperature of 2200K or less are far more tolerable or even without causing effects.

The threat posed by lights to Westland petrels has been known for decades, however the lack of appropriate lighting considerations is just one of many that are still impacting our ecological life today.



Photographer: Edin Whitehead



# ewo

## Chameleon GOBO & Eclipse

Thanks to its modular approach, the Chameleon family not only enables high-quality lighting solutions, but also impresses with its sustainable product design. Inspired by nature, Chameleon is the most compact and intelligent gobo projector that offers dynamic lighting with optical color mixing.

Introducing the new eclipse. Inspired by the namesake, this new outdoor luminaire is perfect for all public realm and colour applications that require effective cyclical light from an architectural, aesthetically beautiful fitting.



Image courtesy of ewo srl



# EXTREME CORROSION PROTECTION

ewo Extreme Corrosion Protection (ewoECP) is a protective treatment developed in-house and is suitable for projects in extreme weather or difficult conditions such as in New Zealand coastal regions.

The ewoECP is a four-step treatment:

- 1.** Corrosion resistant alloy: ewo works with quality materials as standard and for die cast solutions. Luminaries use EN-AB 47100, alloys with low copper content ( $<0.08\%$ ), reducing vulnerabilities for base layer susceptibility to corrosion.
- 2.** A pre-treatment base on the product, for the correct adhesion.
- 3.** An ewoProtectiveLayer – proprietary layer for high-level corrosion resistance.
- 4.** Powder coating.

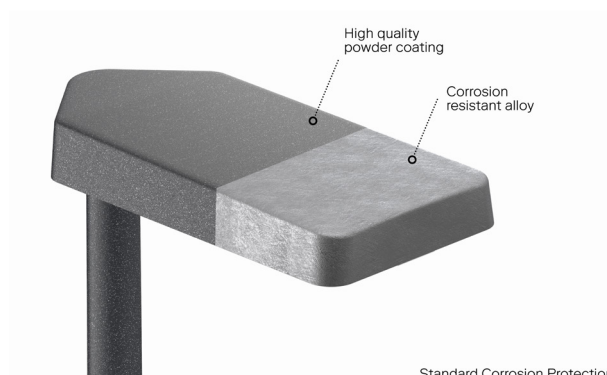
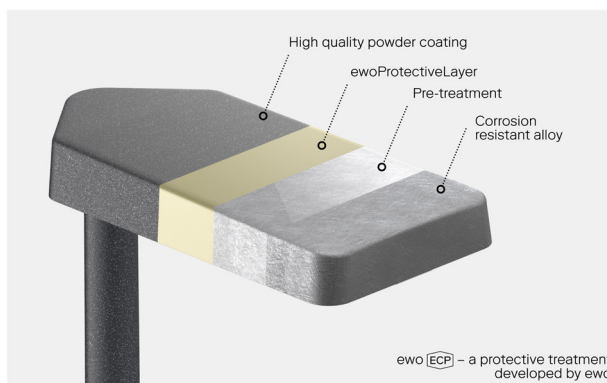


Image courtesy of ewo srl



# ewo LIGHTLAYERS

To ewo, mastering the shape of light is the key to product innovation. Lightlayers, is a family of clip-on accessories that are designed to improve aesthetics and reduce the amount of light pollution and glare.

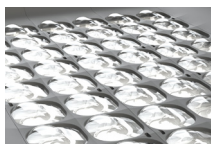
## ANTI-GLARE SHEILD

An accessory that gives each lens individual shade, preventing glare, for greater visual comfort. Functioning with a clip-on mechanism, this accessory reduces glare by up to 70%.

## REDUCED BACKLIGHT SHIELD (RBL)

This cover reduces backlight by up to 65%. It further prevents bright wall spots in the rear of installations in built-up areas by a factor of up to 10. It also works with a simple clip-on mechanism, with a shade that runs behind each row of lenses.

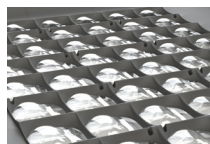
### LIGHTLAYER



Standard Cover



Backlight shield (RBL)



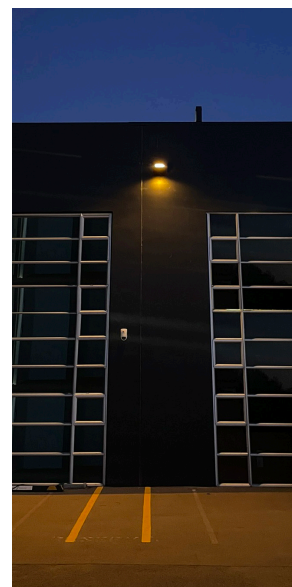
Anti-glare shield (AGR)



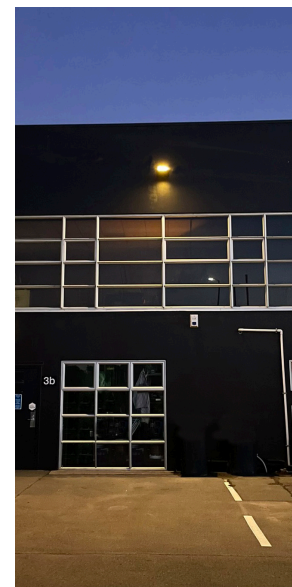
PC AMBER  
60° Cut Off



2200K  
70° Cut Off



2700K  
Backlight Shield



3000K  
No Accessory





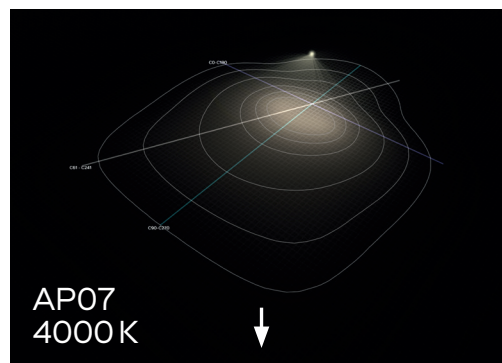
## Lens Combination

Versatility through modularity: with countless lens options and colour combinations. Each solution can be tailored to the project, maximizing individuality.

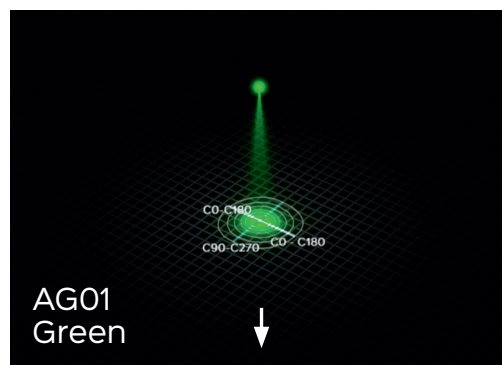
All renders by Mirko Bocek,  
courtesy of ewo srl

## Mastering the shape of light

Toolbox of optic and colour distributions  
for a variety of applications



+



=

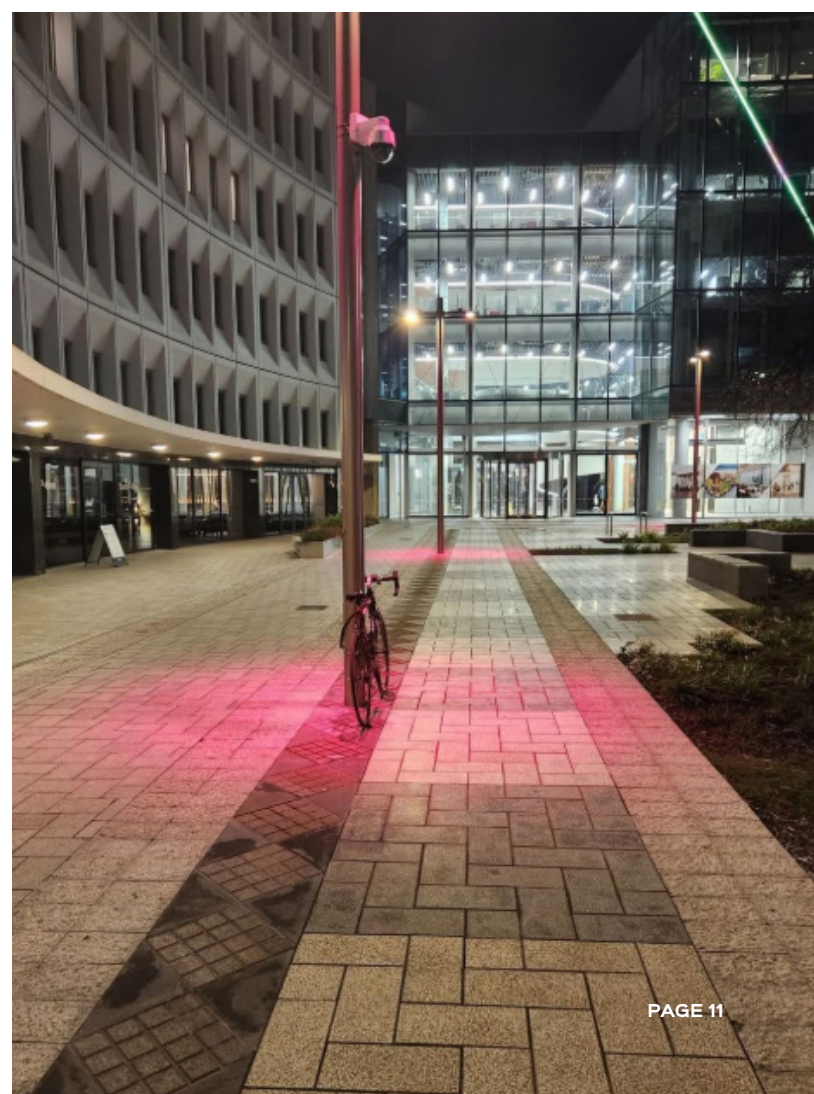
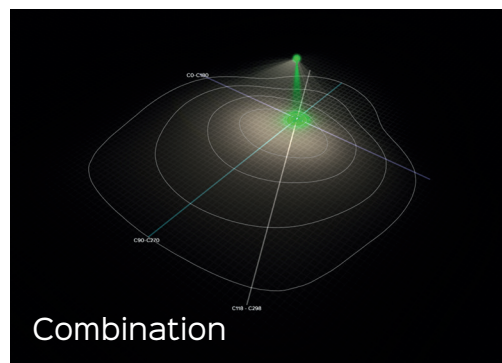






Image courtesy of  
ERCO Lighting Pte Ltd



# TESIS NEW

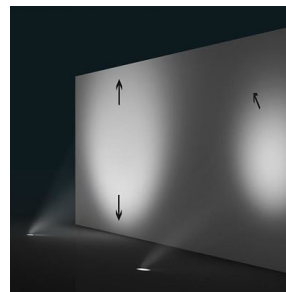
## An innovative archetype in outdoor lighting

The new ERCO Tesis light introduces a refined approach to architectural illumination, particularly with its advanced wall wash optic designed for seamless, uniform vertical lighting. Ideal for enhancing facades, colonnades, and large vertical surfaces, the luminaire delivers precise light distribution with minimal glare. Thanks to its high-efficiency optical system, Tesis achieves even wall illumination with generous spacing of up to 1.5 times the wall height between luminaires—reducing the number of fixtures required without compromising visual impact. Engineered for longevity in demanding environments, the fitting features a robust, weather-resistant construction with high-grade materials that ensure lasting performance and minimal maintenance, even in outdoor or high-traffic settings. This makes it a practical solution for both new projects and retrofit applications, where consistency, durability, and visual clarity are key.

# ERCO



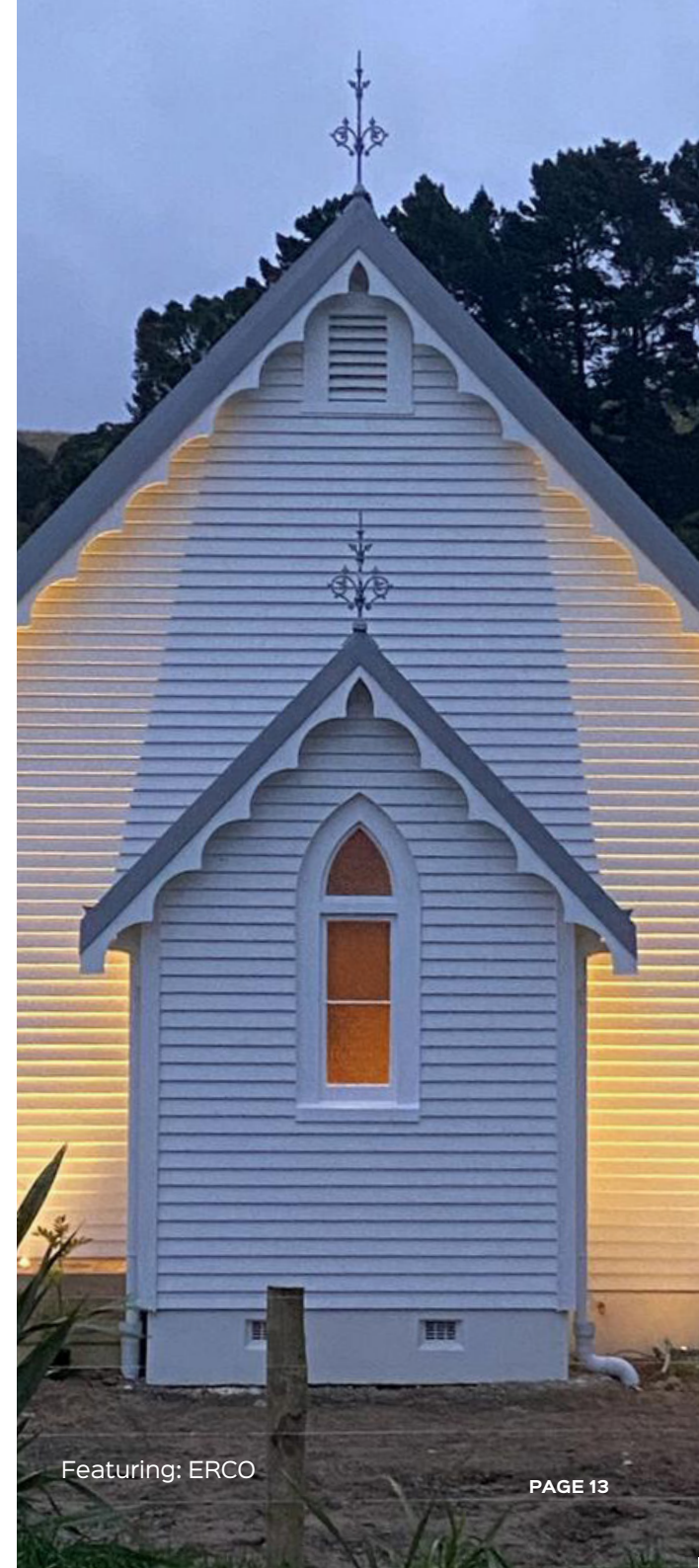
**Light for Dark Sky**  
Tesis was developed and manufactured for real-world demands. Adjustable light heads, precise wallwashers and anti-glare elements ensure light reaches only where needed.



**Flexible Zoom Optics**  
Adjustable zoom light distributions make it possible to infinitely adjust beam angles. A choice of round or oval light distribution with zoom optic is available.



**Change light on site**  
Benefit from planning reliability. Our directional spotlights with interchangeable lenses allow you to change the light distribution on site. This means you can react to unforeseen events at any time.



Featuring: ERCO





Hillmorton Hospital  
Engineer: Beca  
Architect: Klein  
Featuring: Robust Energyline





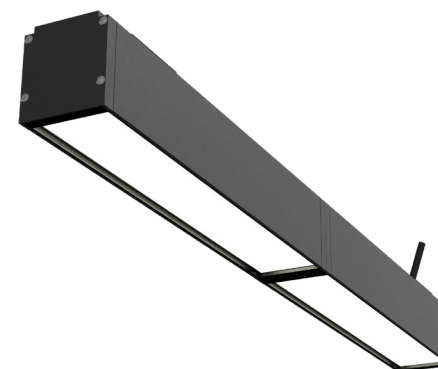
# ENERGYLINE ROBUST

## Architectural Lines of Light for the Outdoor Environment

Energyline Robust enables architectural lines in exterior applications. With IP65 & IK10 it is both an aesthetic and technically excellent linear fitting. Now available in ceiling surface, suspended and recessed options with easy installation and IP rated, live joining connections. You can specify any length in 2800 mm sections and up to 20 metres on a single power feed. With Robust you have a variety of design options for architecturally beautiful spaces.

It uses a silicon pool power feed with IP68 gland inside and a purpose-built end cap design to ensure the IP rating. This allows for diffuser expansion and contraction and therefore no gaps, light leak or water pooling. The polycarbonate diffuser ensures its IK08 rating and there is also the option for standard or extreme corrosion protection. Available in black, white and custom colours, it is fit for use in an extreme range of weather conditions while still giving you architectural lines of light.

ENERGYLINE







Images courtesy of  
CU Phosco





# CU PHOSCO

## From Humble Beginnings to a World Leader

At CU Phosco, innovation runs in the family. What began over a century ago as a small concrete business has grown into the UK's largest designer and manufacturer of exterior lighting. As a fourth-generation, family-owned company, they take pride in their heritage, combining their traditional values of quality with forward-thinking technology to illuminate roads, cities, and critical infrastructure across the globe.

From humble beginnings to becoming a world leader in lighting, Their products are trusted worldwide for road lighting. Built for durability and circularity, they are rigorously tested and made from 100% recyclable or reusable materials. Designed and manufactured in the UK, their products are built to last, using sustainable materials and smart innovations that shape the future of lighting.

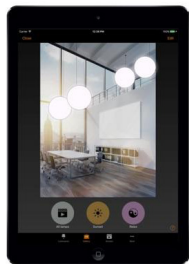






Lyttelton Port Dry Dock  
Engineer: Pedersen Read  
Controls: Holders Technology  
Featuring: ewo

## CONTROLS



# CASAMBI

### Better Solution

An effective lighting solution is no longer just about illumination; it is a human-centric approach that can offer the end-user an enhanced experience, flexible control, and provides limitless possibilities.

### What is the Casambi Ecosystem?

An ecosystem of modules, sensors, luminaries, control gear and other Casambi ready products that are 100% compatible with each other. The foundation of Casambi is based on the universal standard for connecting wireless

mesh networks, it is interoperable, meaning the technology is compatible with an ever-expanding global network of manufacturers and suppliers.

### Why specify with Casambi?

Regardless of a building's original lighting architecture, Casambi can seamlessly integrate with it. Any lighting system produced by a reputable supplier can be coordinated to work alongside Casambi smart lighting and there is continued development effort ensuring the technology stays inline with the industry.



# Product Categories





# FACADE & CANOPY

Vertical surfaces in an urban setting contribute significantly to the spatial definition of squares, traffic routes and buildings. From the point of view of both perception psychology and design, this makes facade lighting a key element in the night lighting concept for urban areas. The illumination of very tall buildings places high demands on the lighting technology and design planning.

Optimum illumination often requires many luminaires with very different light distributions. From a medium lighting distance, wall washers with an asymmetric light distribution are useful for uniformity, but for very large distances, overlapping the beams from several narrow-beam projectors can prove more effective.

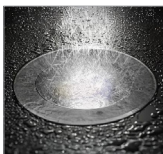


Invercargill Central Facades  
 Architect: Buchan  
 Engineer: Cosgroves  
 Contractor: Nind Electrical  
 Featuring: Lumenpulse

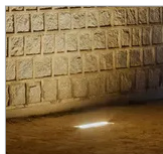
AT Approved



ewo IN Series  
*Outdoor recessed*



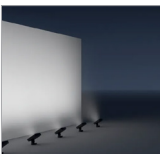
ERCO Tesis  
*In-ground recess*



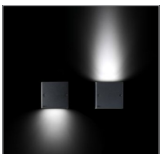
ERCO Site  
*In-ground recess*



ERCO Iku  
*Outdoor recessed*



ERCO Lightscan  
*Façade Projector*



ERCO Kubus  
*Wall mount*



Lumenpulse Max  
*Façade*



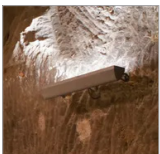
ERCO Beamer  
*Projector*



ewo FA100-WD  
*Wall mount*



ewo FA100-C  
*Ceiling mount*



ERCO Focalflood  
*Façade*



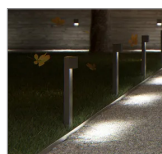


Ōpaoa River Bridge  
 Engineer: WSP  
 Client: Waka Kotahi  
 Featuring: Lumenpulse

# LANDSCAPE

Lighting can be used to introduce additional scenic layers in keeping with the situation and application. The colour of the background lighting influences the impression of the spatial dimensions; accents of brightness or colour can shift the hierarchy of perception.

In outdoor applications, often it is important to build up spatial depth. The contrast and distribution of brightness for the different planes of foreground, and background determines how far away the objects will appear. To provide an effective backdrop for a spatial setting, a judicious use of light is necessary to illuminate feature objects as well as respect classical perspectives.



ERCO Kubus  
 Bollard



Exenia Wolf  
 Low voltage  
 projector



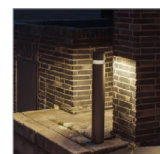
ewo IF Bollard



ewo FA170  
 Bollard

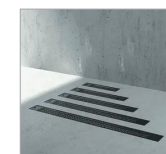


ERCO Beamer  
 Projector



ERCO Castor  
 Bollard

## AT Approved



ewo IN Series  
 Outdoor recessed



ERCO Tesis  
 In-ground recess



ewo Chameleon  
 Projector



# COLOUR & ARCHITAINMENT

Dynamic lighting can highlight a building's heritage while also conserving its historic and ornate architecture. Locations which hold celebrations and events can benefit from such a flexible and dynamic lighting system.

Colour elements should be applied as a diffused or wall-wash effect on light-coloured matt surfaces for a scenic ambient effect. Dark surfaces will adsorb light projected and prevent any colour reflection.



Rangi Ruru Atawhai Building  
 Architect: Eleccom  
 Engineer: McIldowie Partners  
 Contractor: EWSmith Electrical  
 Featuring: Lumenpulse

## AT & M30 Approved



ewo Chameleon  
 Projector



ewo F-System  
 LightTile  
 Pole mount



ewo F-System  
 Series  
 Pole mount



ERCO Beamer  
 Projector



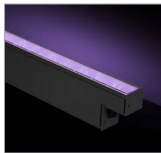
Lumenpulse  
 LumenBeam  
 In-ground



ewo Chameleon  
 GOBO



ewo Eclipse



Lumenpulse  
 LumenFaçade  
 Façade



Lumenpulse  
 LumenBeam  
 Round



Lumenpulse  
 LumenQuad  
 Square





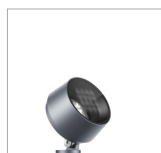
Cathedral Square  
Engineer: Connetics  
Featuring: ewo

## PUBLIC REALM

A strategic approach for illuminating public spaces should consider both safety and aesthetics, as a well-lit space can bring a sense of animation and drama, transforming a functional setting into a space of enjoyment.

We work with a range of clients to deliver public realm and open space lighting schemes, often delivering regeneration programs to transform public spaces whether it is to improve safety or highlighting landmarks. Our team of lighting specialists can provide solutions that are considered and appropriate to the local community and environment whilst exercising restraint to avoid energy waste and reduce harmful impact to local ecology.

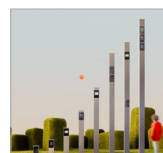
AT & M30 Approved



ERCO Kona  
Projector



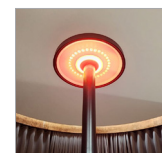
ewo FA Series  
Column



ewo EL series  
Column



ERCO Beamer  
Projector



ewo Eclipse



ewo F-System  
A Series  
Pole mount



ewo Chameleon  
Projector



# ROADWAY & AREA LIGHTING

Depending on mounting heights and roadway geometry, different optics will have vastly different visual results. Optimise with forward throw vs side throw optics and backlight shields which can control and minimize obtrusive light levels, providing visual comfort at the highest level whilst achieving a precise and homogeneous light distribution.



Invercargill Streetscape Upgrade  
Landscape Architect: Isthmus  
Client: Invercargill City Council  
Featuring: ewo, Lumenpulse

## AT & M30 Approved



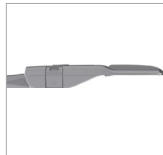
ewo F-System  
Series  
*Pole mount*



ewo GO Series  
*Pole mount*



CU Phosco  
P852K



CU Phosco  
P863K



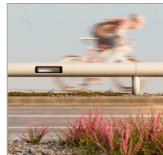
CU Phosco  
E951 64



ewo CN Series  
*Pole mount*



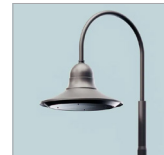
ewo IR System  
A Series  
*Pole Mount*



ewo Razer  
Recessed



ewo SM Heritage  
*Pole Mount*



ewo AM Heritage  
*Pole Mount*



RZB Lightstream  
*Pole Mount*



## PATH & CYCLEWAY

Lighting of the vegetation along the pathway further adds to the feeling of safety, as it ensures better visibility of the surroundings. Soft-edged beams directed onto the path and low illuminances for the surrounding vegetation help the eye adapt between light and dark zones in the landscape. The Dark Sky technology of bollard luminaires, which prevents light spilling above the horizontal plane, is effective in protecting pedestrians and drivers from glare. Good glare control is also crucial for stair lighting, to prevent dazzle resulting from high luminance from the luminaire.

Glenn Innes to Tamaki Drive Stage Two  
Lighting Designer: LDP  
Client: Waka Kotahi  
Featuring: ewo

AT & M30 Approved



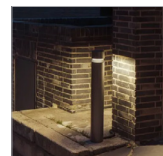
ewo Chameleon  
*Projector*



ewo IR System  
A Series  
*Pole Mount*



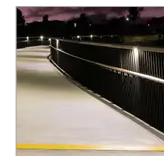
ewo FA170  
*Bollard*



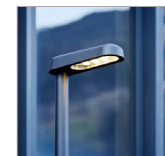
ERCO Castor  
*Bollard*



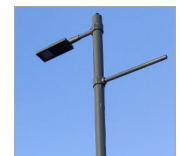
ewo IF  
*Bollard*



ewo ID  
*Handrail series*



ewo GO Series  
*Pole mount*



ewo F-System  
*Pole Mount*



# SOLAR

This advanced solar lighting system offers exceptional efficiency and reliability. Managed by an intelligent smart processor, it ensures continuous all-night performance, supports external devices, and, with flexible battery configurations, can operate for up to eight nights without recharging, making it ideal for high-demand environments.

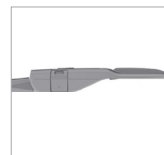
Combined with precision-engineered pathway and area optics from our ewo range and road capabilities from the CU Phosco range, the system provides outstanding uniformity, visual comfort, and dependable performance. Designed for New Zealand's challenging conditions, it offers a resilient, future-ready lighting solution for safer, smarter, and architecturally sensitive spaces.



Image courtesy of Green Frog



Green Frog  
Aeromax  
Solar



CU Phosco  
P863K



ewo F-System  
Series  
Pole mount

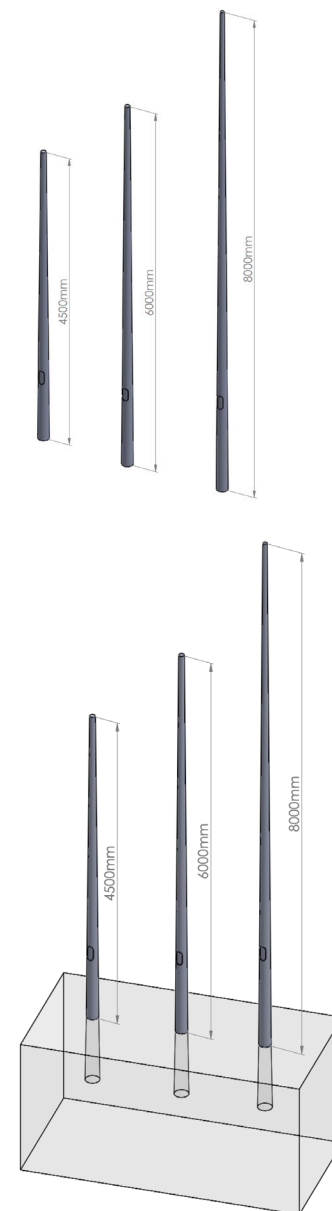




Invercargill Streetscape Upgrade  
 Landscape Architect: Isthmus  
 Client: Invercargill City Council  
 Featuring: ewo, Lumenpulse

- Range of styles and sizes available  
i.e, round tapered, stepped, conical, round  
or square
- Ground planted or flange base
- Painted or galvanised
- Full range of RAL colours available
- Pole top or outreach arm options
- Custom pole options
- Steel or alloy

## POLES







Invercargill Central Facades  
Architect: Buchan  
Engineer: Cosgroves  
Contractor: Nind Electrical  
Featuring: ewo, Lumenpulse





## VANDAL RESISTANT

The vandal resistance is based on resistance to deliberate or accidental impacts as well as design for anti-ligature. These are specialised light fittings that require highly detailed features and high impact ratings.

Key features of vandal resistant

- Anti-ligature
- Impact resistant
- Vandal resistant
- Back cable entries
- Recessed solutions
- Ripping-out resistance

**IK10 ++**

**IMPACT RESISTANCE**



Solite  
*Shield Tau*



Solite  
*Cornice*









Lancaster Park Gates  
Engineer: Connetics  
Featuring: ERCO, ewo  
Photographer: Ian Hutchison

## OUR BROCHURES



## CONTACT US



James Duder  
Sales Director  
National



Caleb King  
Technical Director  
National



Mark Jansen  
Creative Director  
National



Donna Julian  
Lighting Specialist  
Team Lead - AKL



Allan Davies  
Lighting Specialist  
Auckland



Divya Somerville  
Lighting Specialist  
Auckland



Mike Geddis  
Lighting Specialist  
Outdoor - National



Rochelle Wong  
Lighting Specialist  
Christchurch



Derek Colley  
Lighting Specialist  
Christchurch





Invercargill Central Facades  
Architect: Buchan  
Engineer: Cosgroves  
Contractor: Nind Electrical  
Featuring: Lumenpulse

Rev 3 — June 2025

[www.energylight.net](http://www.energylight.net) | [contact@energylight.net](mailto:contact@energylight.net)

AUCKLAND: 504/150 Karangahape Road, CBD | 03 977 2034

CHRISTCHURCH: 204 Cumnor Terrace, Woolston | 03 977 2034



**energylight**  
knowledge | solutions