

# Humans **desire** **organic** shapes

IN NATURE...

IN FOOD...

IN ARCHITECTURE...

We are intrinsically linked to nature. This human connection with the natural world continues to guide our design thinking.

Evolving our connection with nature through Biophilic design integration can now be realised through **curvilinear lighting**.



**ARCHITECT: ZAHA HADID**

Zaha Hadid Architects was appointed as design architects of the Heydar Aliyev Center following a competition in 2007.

The Center, designed to become the primary building for the nation's cultural programs, breaks from the rigid and often monumental Soviet architecture that is so prevalent in Baku, aspiring instead to express the sensibilities of Azeri culture and the optimism of a nation that looks to the future.

**ARCHITECT: KOICHI TAKADA**

Key participant in the interior design of Jean Nouvel's National Museum of Qatar which opened in March 2019.

The Gift Shop design makes use of soaring, curved and layered wooden surfaces and does indeed recall a desert cave.

“There are 360 degrees, **so why stick to one?**”

**ZAHA HADID**

Organic shapes and natural forms are being used in architecture to appeal to the human psyche.

This is not by accident. Organic curved shapes in architecture connects us to nature in the built environment.

This brings a sense of curiosity, interest and calm to buildings.

True to our DNA of **innovation**, Energyline now delivers functional, quality light in **organic forms**.

#### WHY ENERGYLINE?

- Sustainability is an integral part of the construction of our Energyline Curves.
- We make specification easy with Adventor.
- Dust protected to appear as good as new in years to come.
- Curvilinear lighting made with care and quality control in New Zealand.
- Highly energy efficient and built to last.
- Factory finished for easy, low risk installation.



## LIGHTING CONTROL

CASAMBI



## STANDARD FORMS



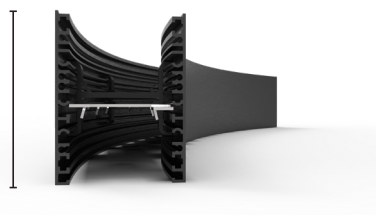
## MOUNTING OPTIONS



## ONLY 86MM HIGH!

For both direct and direct/indirect.

Curves available in 65mm profile.



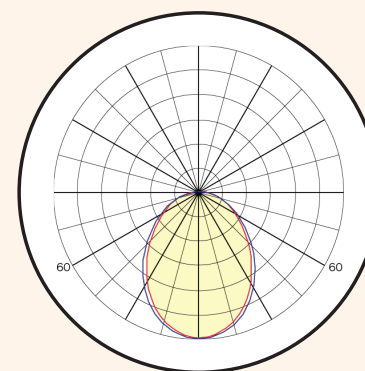
# Custom forms, available on request.

## OPTIONS FOR CURVES

Flexibility in form, mounting options, lighting control and suspension is all explained.

## DATA TABLE

COLOUR TEMPERATURE (CCT)	3000K and 4000K
COLOUR OPTIONS	White, Black or Custom
RADII	500mm, 900mm, 1200mm
ANGLES	45°, 90° (others available on request)
WEIGHT (PER METER)	6kg/+ (indicative)
INGRESS PROTECTION	IP4X
WARRANTY	10 Years
DIFFUSER	Satin







#### IP4X

Protection against dust to ensure Curves look like new for years to come.



#### ACCU-BOLT

This unique innovation creates light-tight connections for low risk rapid installation.



#### FACTORY FINISHED

Made in New Zealand, factory finished ready to install. No disassembly needed onsite. Swift delivery and fast, low risk installation.

## DESIGN APPLICATIONS

### Workplace

Reception areas, breakout spaces, meeting, or boardrooms.

### Community

Terminal buildings, check-in areas, conference centres, places of gathering or private healthcare facilities.

### Education

Central spaces in tertiary and secondary schools.

### Hospitality

Hotel lobbies, high-end restaurants.

### Retail

Large volume shopping centres and circulation spaces.



A licence to bear the FernMark is formal recognition of our product's connection to New Zealand and clearly communicates our country of origin to consumers around the globe.

# ENERGYLINE

ADVENTOR

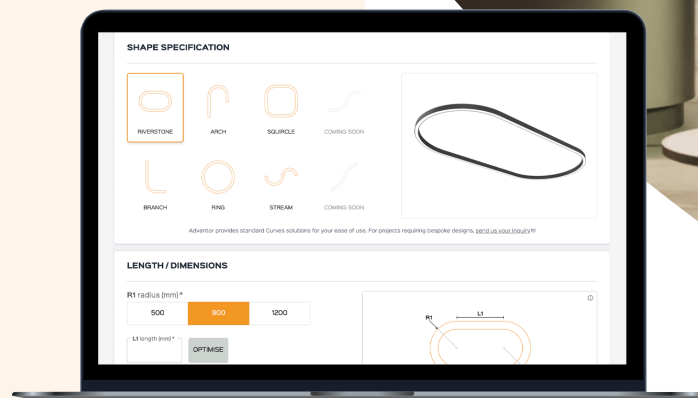
## SPECIFICATION MADE EASY!

Adventor is an easy to use online tool enabling you to create Curves for your next project.

Designed to uncomplicate your job, Adventor is an easy to use smart online tool that provides photometry, data sheets and a drawing. All you need to support your project.

## PEACE OF MIND...

The Energyline products you configure in Adventor we guarantee can be built for your project. This gives you peace of mind that your specification is achievable.



VISIT  
[energyline.net/adventor](https://energyline.net/adventor)



#### OUR PROMISE TO YOU...

We believe sustainability starts with products that are built to last, create real value and change the lives of those who use them.

Sustainable products reduce waste and provide synergy with our economy, environment and society.

Our 10 year warranty serves as a promise that our NZ made products are free from defects in materials and workmanship.